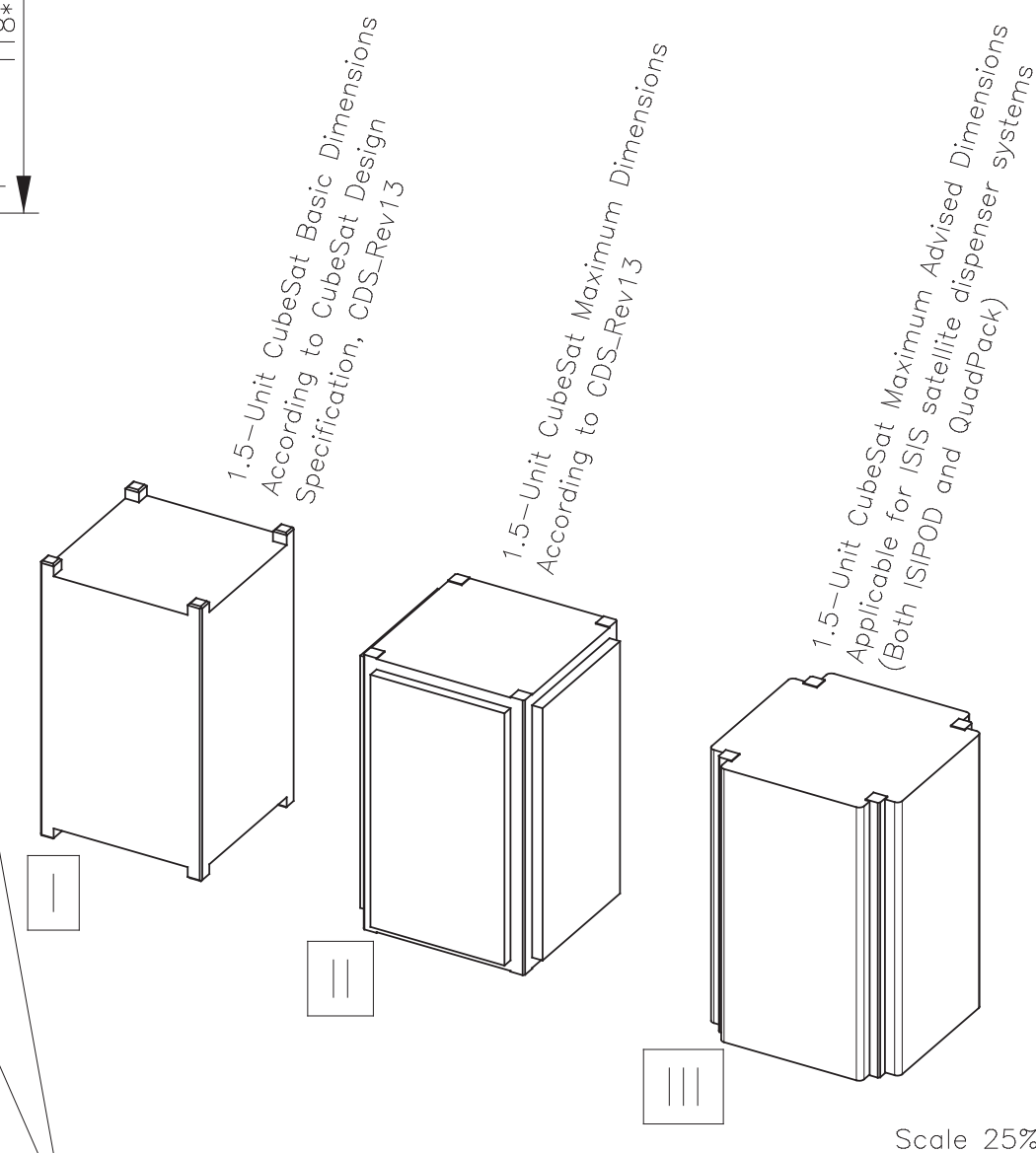
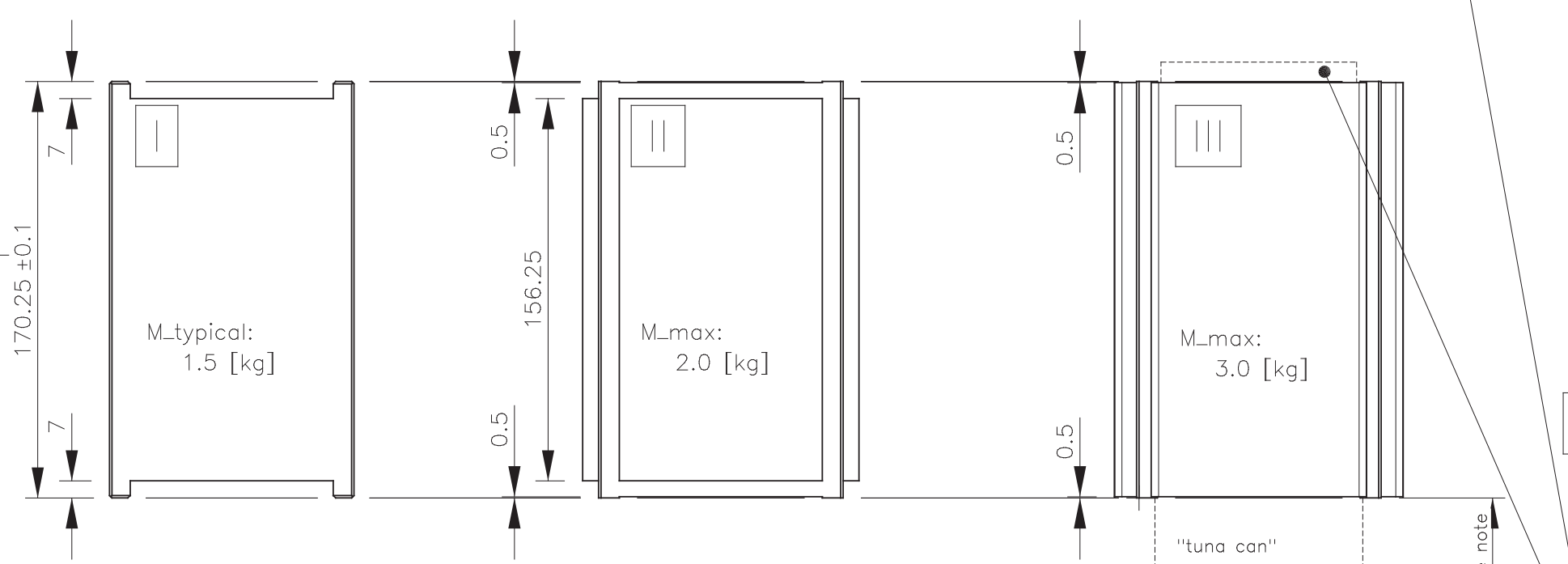
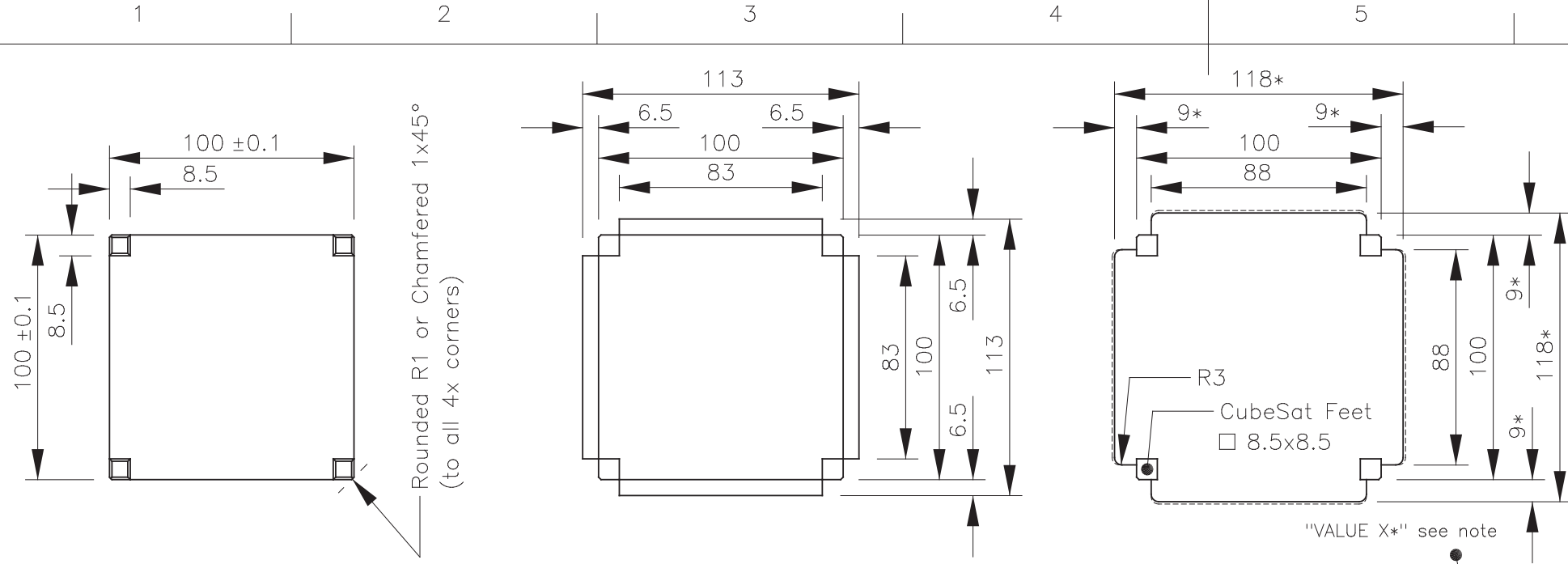


Rev	Description	Date	Initials
A	First release	17 Sep 2014	GLEB
B	Updated release	22 Sep 2014	GLEB

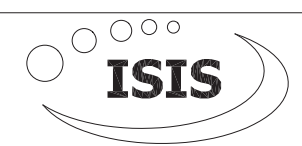
Note: 1.5U CubeSats are deployed by sharing a 3U satellite dispenser, it is because of this that consultation is needed before committing to external volume beyond the 170.25 [mm].



Between the ISIS satellite dispenser systems ISIPOD and QuadPack there are small differences in maximum allowable volume, namely:

- ISIPOD allows for additional space on top,
- QuadPack allows for more volume at all lateral sides,
- Both systems can handle an even larger "tuna can" on the bottom.

The dotted additional volume allocations can only be used after consultation with and written approval from ISIS.



Project name	ISIS Advised Envelope	Scale	40%	By		Date		Material	n.a.
Drawing name	1.5-Unit CubeSat Dimensions	Size	A3	Drawn	GLEB	17 Sep 2014		Surface treatment	n.a.
Drawing number	ISIS.STS.0.1.015	Rev	B	Checked	RSLO	22 Sep 2014		Dimensions	[mm]
		Sheets	1/1	Approved	CBER	22 Sep 2014		Tolerance	±0.1

Notes:
Use "Ctrl"+"5" to select line view